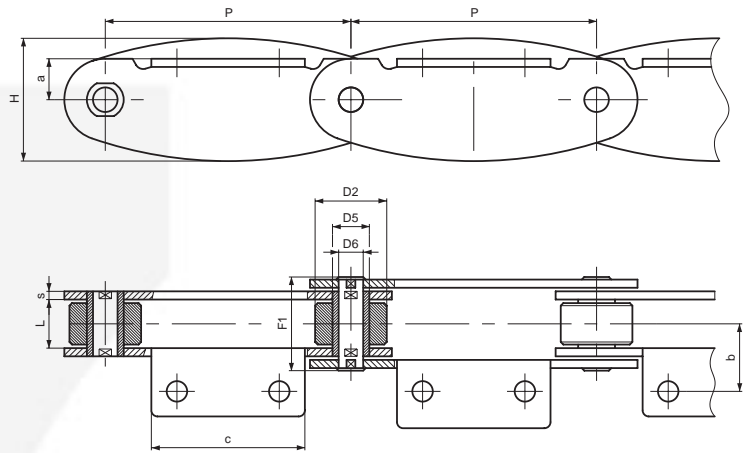
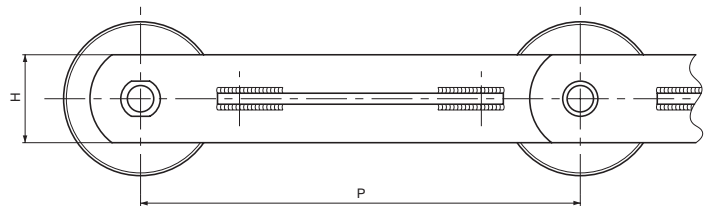


CADENAS PARA APLICACIONES ESPECIALES - TABACO

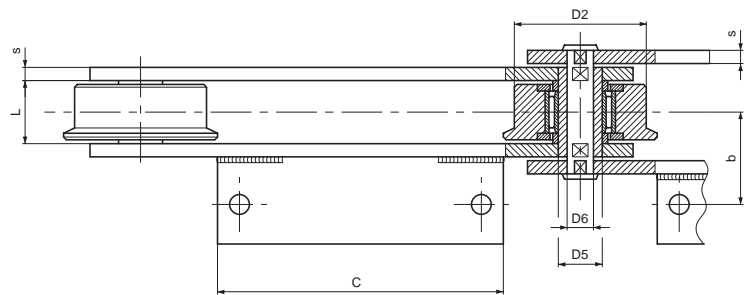


TÚNEL DE SECADO

| Cadena N. | P mm | L mm | D2 mm | D6 mm | H mm | S mm | F1 mm | a mm | b mm | c mm | Carga de rotura N |
|-----------|------|------|-------|-------|------|------|-------|------|------|------|-------------------|
| W3571 | 120 | 22 | 35 | 12 | 60 | 4 | 43 | 20 | 33 | 75 | 90.000 |



TÚNEL DE SECADO

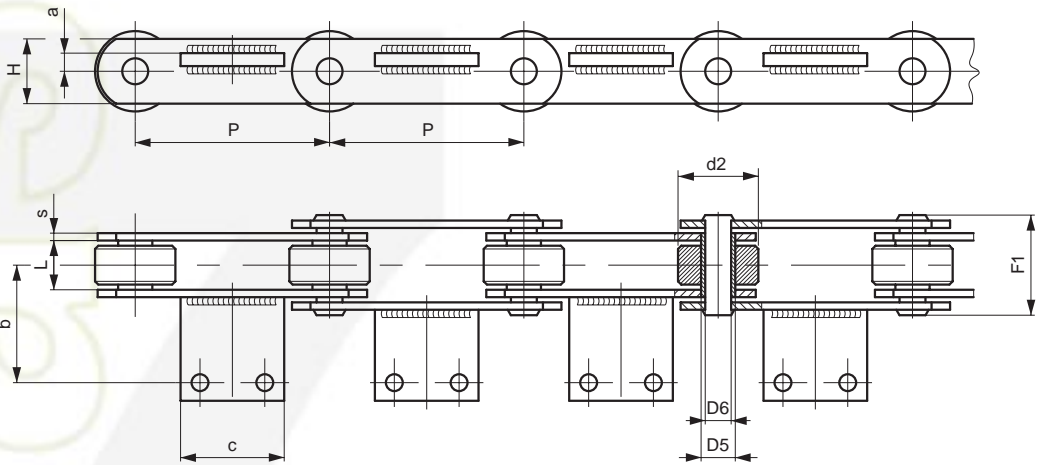


| Cadena N. | P mm | L mm | D2 mm | D6 mm | H mm | S mm | F1 mm | a mm | b mm | c mm | Carga de rotura N |
|-----------|------|------|-------|-------|------|------|-------|------|------|------|-------------------|
| W3616 | 200 | 28 | 60/70 | 12 | 40 | 5 | 55 | 2,5 | 42 | 130 | 60.000 |
| W4088A | 200 | 28 | 50/60 | 14 | 40 | 5 | 55 | -2,5 | 40 | 110 | 130.000 |
| W3840R** | 200 | 37 | 60/70 | 20 | 40 | 5 | 64 | 2,5 | 46,5 | 130 | 150.000 |
| W4919SS* | 200 | 37 | 60/70 | 15 | 40 | 5 | 64 | 2,5 | 46,5 | 130 | 90.000 |
| W4664 | 200 | 38 | 67/82 | 15 | 45 | 6 | 69 | -2,5 | 47 | 110 | 180.000 |


* cadena en acero inoxidable
 ** sin rodamientos



CADENAS PARA APLICACIONES ESPECIALES - TABACO



TÚNEL DE SECADO

| Cadena N. | P mm | L mm | D2 mm | D6 mm | H mm | S mm | F1 mm | a mm | b mm | c mm |  Carga de rotura N | Notas |
|-----------|------|------|---------|-------|------|-------|-------|------|------|------|---|----------------------|
| W3977 | 75 | 15 | 31 | 10 | 25 | 4 | 36 | 7 | 33 | 40 | 45.000 | |
| W1383 | 100 | 15 | 55 | 12 | 30 | 4 | 36 | 23 | 40 | 50 | 70.000 | |
| W4010 | 100 | 26,5 | 50 | 12,6 | 35 | 5 | 54 | 6 | 41,5 | 55 | 100.000 | |
| W3596R | 100 | 26,5 | 50 | 12 | 35 | 5 | 54 | -14 | 49,5 | 35 | 100.000 | |
| W3458R | 100 | 28 | 50 | 14,4 | 35 | 5 | 54,5 | 14 | 49,5 | 35 | 130.000 | |
| W2988CR | 200 | 26,5 | 60 | 16 | 40 | 5 | 54 | 2,5 | 43,5 | 130 | 150.000 | |
| W2520 | 200 | 28 | 65 | 18 | 50 | 6 | 59 | 13 | 53 | 60 | 160.000 | |
| W4088 | 200 | 28 | 50/60 | 12 | 40 | 5 | 59 | -2,5 | 40 | 110 | 100.000 | rodillos con pestaña |
| W3808 | 200 | 37 | 70 | 18 | 50 | 7 | 72 | 3 | 62 | 115 | 260.000 | |
| W3840R | 200 | 37 | 60/70 | 12,4 | 40 | 5 | 63,5 | 2,5 | 46,5 | 130 | 110.000 | rodillos con pestaña |
| W3782 | 200 | 38,5 | 100/112 | 30 | 80 | 10/12 | 91 | 3 | 73 | 95 | 850.000 | rodillos con pestaña |
| W3790 | 200 | 38,5 | 100/112 | 36 | 90 | 12 | 97 | -3,5 | 73 | 95 | 1.600.000 | rodillos con pestaña |

